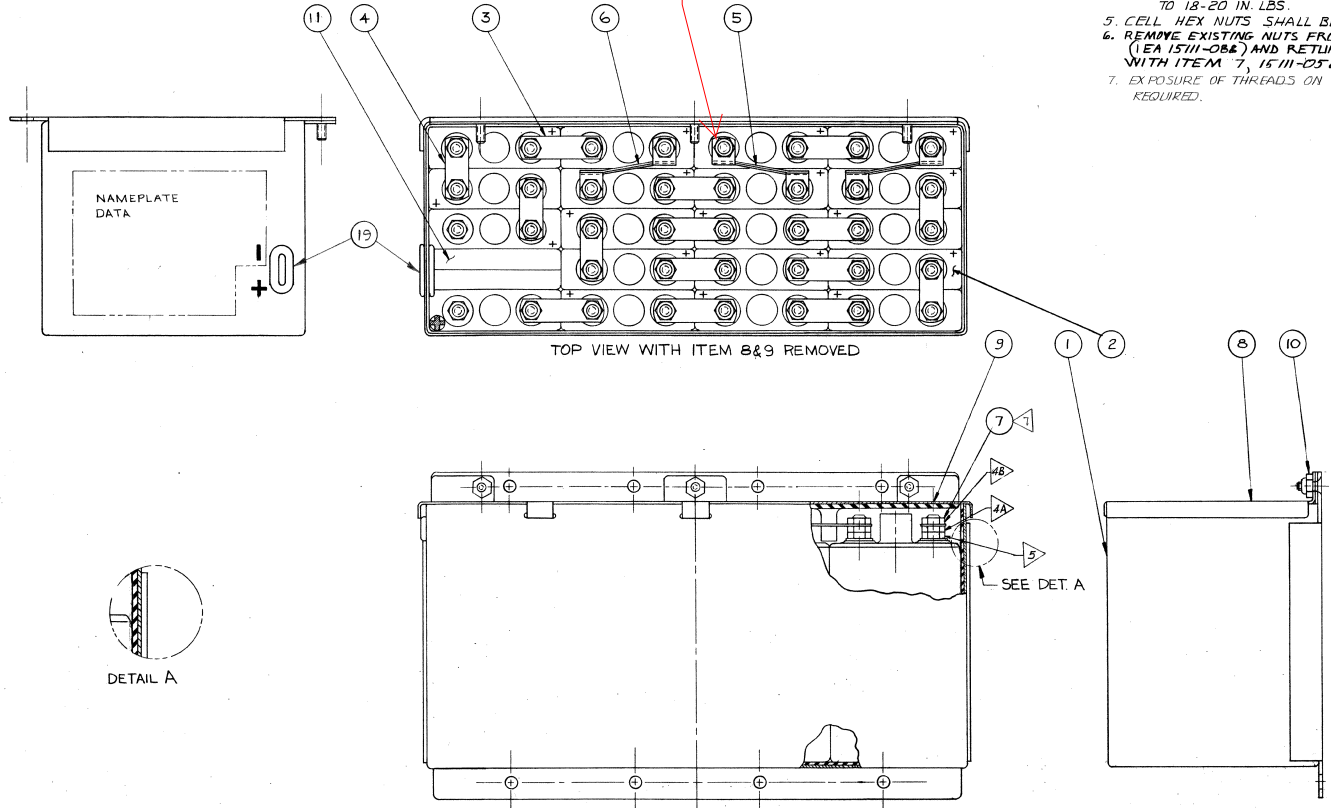


NOTES: ▷

1. EXTRA HEX NUTS TO BE SUPPLIED FOR BATTERY TERMINALS. TWO FOR EACH TERMINAL.
2. MAXIMUM WEIGHT FOR MA-300H - 10 LBS. 20% WET.
3. CELL CASE MATL. - NYLON - ZYTEL #151B OR EQUAL.
4. TORQUE IT. 7 NUTS AS FOLLOWS:  
 A. MIDDLE NUT - TORQUE TO 7-8 IN. LB.  
 B. TORQUE NUT ABOVE INTERCELL CONNECTOR (LINK) TO 18-20 IN. LBS.
5. CELL HEX NUTS SHALL BE TORQUED 6-8 IN. LBS.
6. REMOVE EXISTING NUTS FROM CELL TERMINALS (1EA 15111-082) AND RETURN TO STOCK. REPLACE WITH ITEM 7, 15111-058.
7. EXPOSURE OF THREADS ON THE THREE NUT SYSTEM IS NOT REQUIRED.

**VENT CAP ASSY**  
16463-001



GOVT. CELGARD NON MIL SPEC.	GOVT. CELGARD NON MIL SPEC.	GOVT. CELGARD MIL SPEC.	GOVT. PERAMON NON MIL SPEC.	COMMERCIAL CELLOPHANE	GOVT. PERAMON MIL SPEC.	ITEM NO.	QTY REQD	DESCRIPTION	DWG SIZE	PART NO.	NOTE
						20					
X	X	X	X	X	X	14	1	GROMMET	C	15B78-006	
X	X					18	1	CAN, MARKED AF NON MS CELGARD	C	40002-003	
X	X					17	19	OL, CELL CELGARD NON MIL SPEC	C	A22378-010	
		X				16	19	OL, CELL CELGARD MIL SPEC	C	B22378-010	
			X			15	19	OL, CELL PERAMON NON MIL SPEC	C	B22378-011	
				X		14	19	OL, CELL PERAMON MIL SPEC	C	A22378-011	
X	X	X	X	X	X	13	1	CAN, MARKED GOVT NON MIL SPEC	C	40002-002	
X	X	X	X	X	X	12	1	CAN, MARKED GOVT MIL SPEC	C	40002-001	
X	X	X	X	X	X	11	1	CELL, DUMMY	C	18534-001	
X	X	X	X	X	X	10	3	NUT, STOP ESNA *79NM-62	C	15015-010	
X	X	X	X	X	X	9	1	INSULATOR, PLATE	C	18236-001	
X	X	X	X	X	X	8	1	COVER	C	18234-001	
X	X	X	X	X	X	7	11/4	NUT, HEX.	C	15111-058	67
X	X	X	X	X	X	6	2	LINK, BATTERY TERM.	B	18233-001	
X	X	X	X	X	X	5	1	LINK, BATTERY TERM.	B	18233-002	
X	X	X	X	X	X	4	5	CONNECTOR	C	9877-033	
X	X	X	X	X	X	3	10	CONNECTOR	C	9877-034	
X	X	X	X	X	X	2	19	ASSY, CELL 34120 0422378-001	C	23177-001	
						1	1	CAN, MARKED COM L	D	40003-001	

LIST OF MATERIALS

UNLESS OTHERWISE SPECIFIED DIMENSIONS ARE IN INCHES TOLERANCES		DECIMAL		FRACTIONS	
BASIC DIMENSION		±.005		±.015	
UNDER 6		±.005		±.015	
6 - 24 INCL		±.005		±.020	
FRACTIONS 2/64" ANGLER ± 30°					
MATERIAL:		DRAWN		6-24-75	
		CHECKED		6-24-75	
		APPROVED		7-28-75	
		DATE FIRST DISTRIBUTED		7-28-75	
NEXT ASSY USED ON		DIST. CODE		A	
APPLICATION		SCALE		N.T.S. DO NOT SCALE	

**Marathon Power Technologies**  
Waco, Texas

**IPL, BATTERY**  
MA-300H

SIZE CODE IDENT NO. **IPL-1100**

D 74025

SHEET 1 of 1

PROPRIETARY AND CONFIDENTIAL  
 INFORMATION CONTAINED HEREIN IS PROPRIETARY AND IS THE PROPERTY OF MARATHONPOWER TECHNOLOGIES, INC. FOR PROPOSALS IT SHALL ONLY BE USED TO EVALUATE THE PROPOSAL. WHEN GIVEN TO CUSTOMERS IT SHALL ONLY BE USED FOR INSPECTION, INSTALLATION, OR MAINTENANCE. FOR SUPPLIERS IT SHALL BE USED SOLELY FOR WORK CONTRACTED FOR BY THIS COMPANY. THIS DRAWING SHALL NOT BE DISCLOSED TO ANY 3RD PARTY WITHOUT EXPRESSED WRITTEN CONSENT. THIS DRAWING SHALL BE DISPOSED OF BY THE RECIPIENT WITHIN 3 YEARS OF RECEIPT UNLESS A LONGER TIMEFRAME IS GRANTED BY AN APPLICABLE NDA.